



*I Choose*



**FOR CONTINENCE CARE**





Ontex is a leading international manufacturer of personal hygiene solutions.

iD is one of the flagship brands of the Ontex Group, a leading healthcare manufacturer with a special focus on innovation, technology, and research programs. Ontex is present in over 110 countries offering hygiene product solutions for women, men, children, and babies.

			
<b>Baby Care</b> From newborn to toddlers. Ontex are the only manufacturer of nappies in Australia.	<b>Feminine Care</b> Ideal for women who want discreet protection.	<b>Adult Care</b> Ideal for consumers with light to heavy incontinence.	<b>Worldwide</b> Our quality, value for money products are distributed in more than 110 countries.

I Choose



- ✓ A complete range of light to heavy incontinence solutions.
- ✓ Approved by dermatologists.
- ✓ Clients can order online in the comfort & privacy of their home.
- ✓ A full skincare range for continence care. Cleanse, Moisturise and Protect.
- ✓ All iD Pants and Slips have complete skin protection.
- ✓ The iD range is 100% breathable to preserve the integrity of the skin.

**DISTRIBUTION**

iD, Lille and Kylie incontinence products are only available through distributors. VISIT [www.ontexhealthcare.com.au](http://www.ontexhealthcare.com.au)



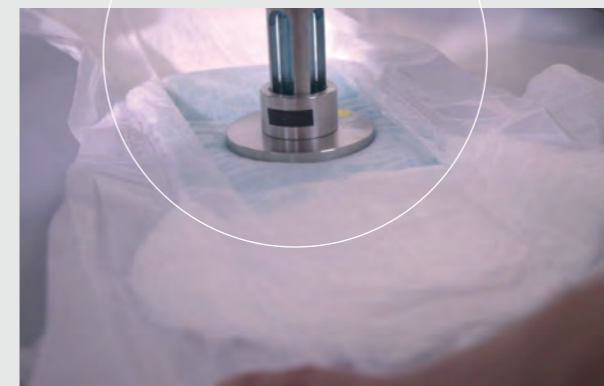
We provide high quality continence care at affordable prices. Our disposable incontinence brands iD and Lille, plus our skincare range and the iconic mattress protection brand Kylie, provides solutions for all types and levels of incontinence.



Our brands have got you covered!



**iD:** A comprehensive range of light to heavy incontinence solutions. With leading-edge innovations and a focus on complete skincare protection, iD products provide confidence and comfort for your clients.

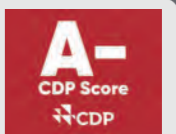


**Lille:** A trusted incontinence brand, Lille offers effective solutions from discreet liners to high-absorbency pads, Lille aims to provide your clients with optimal performance while preserving the integrity of your clients skin with all products 100% breathable.

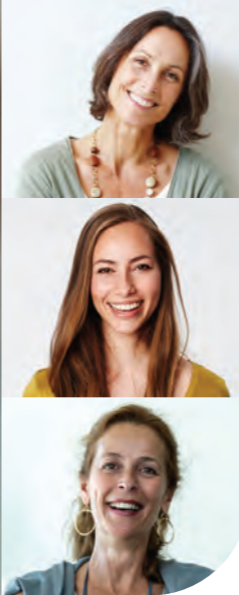
**Kylie:** Trusted range of washable bedding protection for over 45 years. Kylie has advanced technology with a five layer system that ensures the user stays dry and comfortable.

**Sustainability and Care for the Planet:**

At Ontex, we prioritise natural materials, reduce plastic usage, promote recyclability and avoid harmful chemicals. Ontex has an **A-** climate action rating by being transparent about how we emit carbon.







**Shaped Pads**   
 ideal for active women who want discreet protection.

The iD Light range of shaped pads are discreet, comfortable with 10 hours of odour neutralising technology ensures the ultimate protection. The iD Expert Lights range is a unisex shaped pad ideal for active people who want discreet protection for slight urinary incontinence losing a few drops.

**TIPS**  
 For sports activities we recommend iD Light Extra or iD Light Maxi.



As secure as you need.



Unparalleled thinness makes it unnoticeable underneath clothing.



Double Anti-leak Barrier.

Above features refer to iD Light range.

PRODUCT CODE	DESCRIPTION	PAD LENGTH	DROPLET SCALE	TOTAL CAPACITY ISO	UNITS PER PACK	PACKS PER CARTON
5121020201	iD Mini	227mm		170ml	20	12
5171025161	iD Mini Plus	257mm		260ml	16	18
5171030121	iD Light Normal	270mm		295ml	12	12
5171040101	iD Light Extra	340mm		500ml	10	12
5171055101	iD Light Maxi	370mm		668ml	10	12
5171070100	iD Light Super	405mm		800ml	10	12

PRODUCT CODE	DESCRIPTION	PAD LENGTH	DROPLET SCALE	TOTAL CAPACITY ISO	UNITS PER PACK	PACKS PER CARTON
5160030280	iD Expert Light Normal	280mm		295ml	28	12
5160040280	iD Expert Light Extra	350mm		500ml	28	10
5160050280	iD Expert Light Maxi	405mm		668ml	28	6





## Pouch & Pants



ideal for active men who want ultra protection.

The iD for men's range is a new protection concept that provides comfort and security and is designed specifically for men. The male pouch and pull up pants are designed with power dry technology has a cotton sensation, ultra discreet fit with rapid absorption and odour control.



iD Pouch for Men Level 2  
Capacity 430ml



iD Pouch for Men Level 3  
Capacity 653ml



iD Pants for Men Level 4  
Sizes M/L  
Capacity 990ml

PRODUCT CODE	DESCRIPTION	PAD SIZE	DROPLET SCALE	WAIST	TOTAL CAPACITY ISO	UNITS PER PACK	PACKS PER CARTON
5221040100	iD Pouch For Men Level 2	-		-	430ml	10	16
5231050140	iD Pouch For Men Level 3	-		-	653ml	14	12
5521260120	iD Pants For Men Level 4	M		80-120cm	990ml	12	8
5521360100	iD Pants For Men Level 4	L		100-145cm	990ml	10	8



POWER DRY

## TIPS

For sport activities we recommend iD for men level 3. Ideal for men post prostate surgery.



Rapid Absorption



Cotton Sensation



Odour Control



Perfect Fit



Ultra Discreet



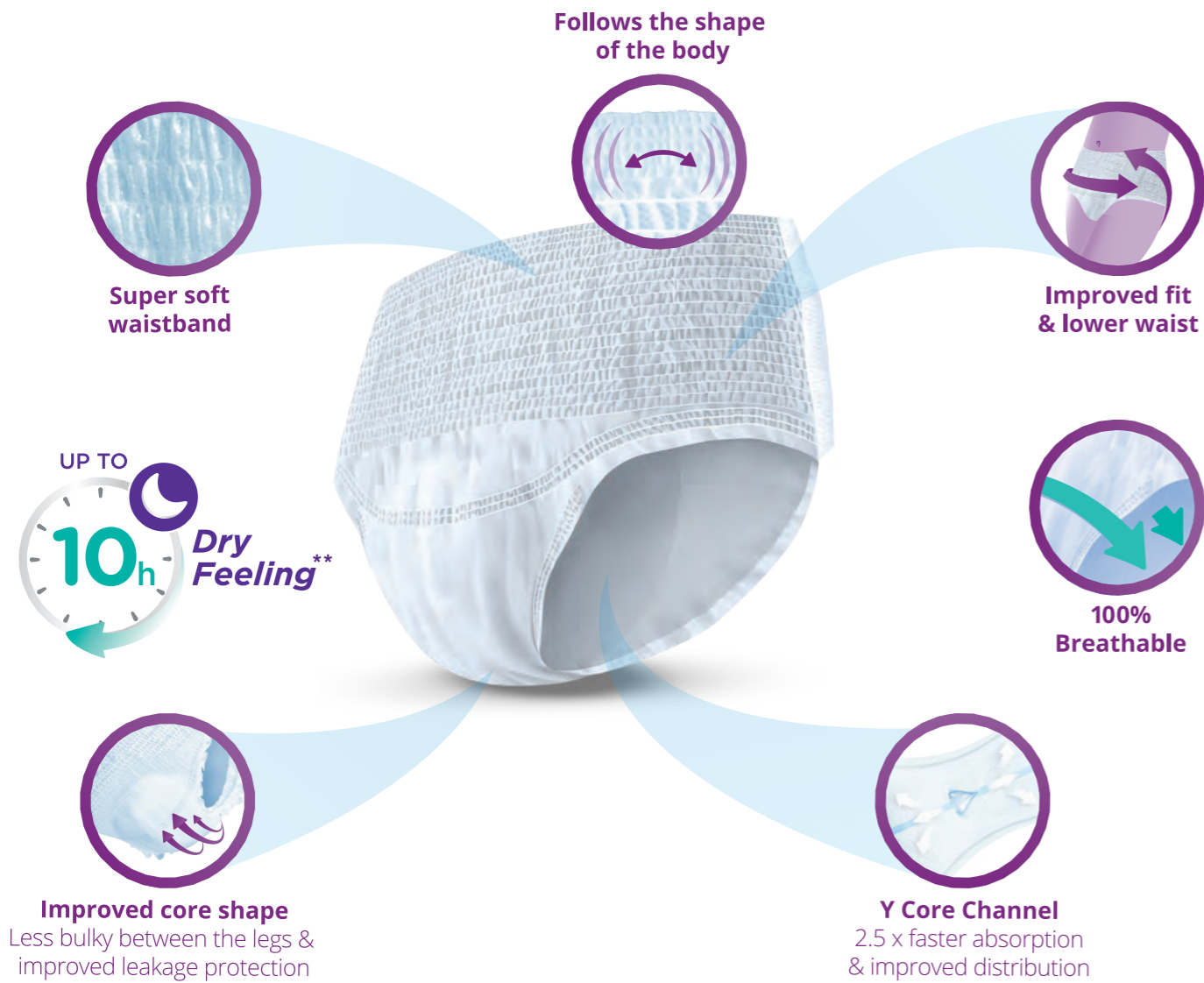


**NEW!**



# iD PANTS WITH HYPER PROTECTION

2.5 X Faster Absorption



## TIPS

If you use iD Light pads during the day, iD pants may be ideal for night use.



Fast Absorption/  
Instant Dryness



100%  
Breathable



Top Sheet with  
Optimal Skin Protection



Odour Control



Double Anti-leak  
Barriers



**Pants**



ideal for active independent people.

iD Pants with the new Y core channel have 2.5 x faster absorption\* that offers improved distribution and leakage protection. These pants now have a super soft lower waistband for comfort and a more discreet fit. Instant dryness, 100% breathable and a unique top sheet with natural ingredients, all iD pants offer complete skin protection to reduce the risk of skin irritations.



iD Pants Normal  
Sizes M/L  
Capacity 1045ml



iD Pants Plus  
Sizes XS/S/M/L/XL  
Capacity 1300/1320/1375ml



iD Pants Super  
Sizes M/L/XL/XXL  
Capacity 1870/1655ml



iD Pants Maxi  
Sizes M/L/XL  
Capacity 2200ml



2.5 X FASTER  
ABSORPTION

PRODUCT CODE	DESCRIPTION	PAD SIZE	DROPLET SCALE	WAIST	TOTAL CAPACITY ISO	UNITS PER PACK	PACKS PER CARTON
iDS62211114	iD Pants Normal	M	4 droplets	80-120cm	1045ml	14	8
iDS62311114	iD Pants Normal	L	4 droplets	100-145cm	1045ml	14	8
5531065141	iD Pants Plus	XS	5 droplets	50-70cm	1300ml	14	4
5531165140	iD Pants Plus	S	5 droplets	60-90cm	1320ml	14	8
iDS62221114	iD Pants Plus	M	5 droplets	80-120cm	1375ml	14	8
iDS62321114	iD Pants Plus	L	5 droplets	100-145cm	1375ml	14	8
iDS62421114	iD Pants Plus	XL	5 droplets	130-170cm	1375ml	14	8
iDS62232114	iD Pants Super	M	6 droplets	80-120cm	1870ml	14	8
iDS62332114	iD Pants Super	L	6 droplets	100-145cm	1870ml	14	8
iDS62432114	iD Pants Super	XL	6 droplets	130-170cm	1870ml	14	8
5531575120	iD Pants Bariatric Super	XXL	6 droplets	165-205cm	1655ml	12	4
5531280100	iD Pants Maxi	M	7 droplets	80-115cm	2200ml	10	8
5531380100	iD Pants Maxi	L	7 droplets	100-145cm	2200ml	10	8
5531480100	iD Pants Maxi	XL	7 droplets	130-170cm	2200ml	10	8

\* New iD Pants with Y core channel 2.5 x faster absorption compared to iD Classic Pants.  
\*\* Up to 10h dry feeling applies to the iD Pants Maxi.

A unique top sheet for complete skincare protection.

Approved by dermatologists



Camomile has a soothing & calming effect.



VITAMIN E is known for its antioxidant properties.

Natural ingredients that protect skin integrity.





# iD SLIPS, NOW WITH COMPLETE SKIN PROTECTION

100% Breathable

Double anti-leak barriers



Fast absorption / instant dryness



Camomile & Vitamin E for optimal skin protection



## TIPS

For night use we recommend iD Slip Super or Maxi.



Fast Absorption / Instant Dryness



Odour Control



Double Anti-leak Barrier



Double Wetness Indicator



Cotton Feel



All In One Pad

ideal for people with limited mobility with moderate to heavy incontinence.

The iD Slip range of all-in-one pads have high levels of absorption and now with complete skin protection - fast absorption, instant dryness, are 100% breathable, and contain natural ingredients that protects the integrity of the skin. The four resealable tabs make it easy to apply the slip.



iD SLIP Plus  
Sizes S/M/L/XL  
Capacity 1800/2000/2350/3200ml



iD SLIP Extra Plus  
Sizes M/L  
Capacity 2600/2950ml



iD SLIP Super  
Sizes S/M/L/XL/XXL  
Capacity 1550/2100/3400/3700/3800/3200ml



iD SLIP Maxi  
Sizes S/M/L/XL  
Capacity 2300/3600/4500/4500ml

## COMPLETE SKIN PROTECTION



PRODUCT CODE	DESCRIPTION	PAD SIZE	DROPLET SCALE	WAIST	TOTAL CAPACITY ISO	UNITS PER PACK	PACKS PER CARTON
5630160140	iD Slip Plus	S	4 droplets	50-90cm	1800ml	14	4
5610260280	iD Slip Plus	M	4 droplets	80-125cm	2000ml	28	4
5610360280	iD Slip Plus	L	4 droplets	115-155cm	2350ml	28	4
5630460140	iD Slip Plus	XL	4 droplets	120-170cm	3200ml	14	4
5610270280	iD Slip Extra Plus	M	5 droplets	80-125cm	2600ml	28	3
5610370280	iD Slip Extra Plus	L	5 droplets	115-155cm	2950ml	28	4
5630075140	iD Slip Super	XS	3 droplets	40-70cm	1550ml	14	12
5630175140	iD Slip Super	S	3 droplets	50-90cm	2100ml	14	4
5630275280	iD Slip Super	M	3 droplets	80-125cm	3400ml	28	3
5630375280	iD Slip Super	L	3 droplets	115-155cm	3700ml	28	3
5630475140	iD Slip Super	XL	3 droplets	120-170cm	3800ml	14	4
5630575150	iD Slip <b>Bariatric</b> Super	XXL	3 droplets	175-210cm	3200ml	15	4
5630180200	iD Slip Maxi	S	5 droplets	50-90cm	2300ml	20	4
5630280151	iD Slip Maxi	M	5 droplets	80-125cm	3600ml	15	3
5630380151	iD Slip Maxi	L	5 droplets	115-155cm	4500ml	15	3
5630480150	iD Slip Maxi	XL	5 droplets	120-170cm	4500ml	15	3





# iD belt & RECTANGULAR PAD

## Adjustable Briefs & Rectangular Pad



**Belts** are ideal for people with reduced mobility.  
**Rectangular Pads** ideal for light to moderate incontinence.



The **iD Belt range** is designed to offer protection for moderate to severe incontinence for up to 6 to 8 hours and is easy to apply and adjustable. The backsheet is 100% breathable.  
The **Rectangular pads** can be used inside any iD product with anti leakage protection and is suitable for faecal incontinence and also can be used as a Booster.



**iD Belt Plus**  
Sizes S/M/L/XL  
Capacity 1500/1750/  
1850/2100ml



**iD Belt Super**  
Sizes S/M/L/XL  
Capacity 1900/2100/  
2400/2600ml



**iD Belt Maxi**  
Sizes S/M/L/XL  
Capacity 2600/2900/  
3400/3400ml



**RECTANGULAR Pad Mini**  
Size 11 x 36cm  
Capacity 490ml



**RECTANGULAR Pad Maxi**  
Size 15 x 60cm  
Capacity 1050ml



## TIPS

The iD Belt range provides 6-8 hours protection and is ideal for night use.



Fast Absorption / Instant Dryness



Odour Control



Anti-leak Barriers



Double Wetness Indicator



100% Breathable

## TIPS

Use with iD Net Pants, for lighter absorption requirements you can use with underwear.  
iD Form Maxi is ideal for night use.



Odour Control



Cotton Feel



Fast Absorption Instant Dryness



Double Wetness Indicator



100% Breathable

# iD form

## Shaped Anatomic Pads



Ideal for people with moderate to heavy incontinence who require assistance with toileting.

The **iD Forms** is a range of anatomically shaped pads with high absorbency capacity. Comfortable to wear with fitted underwear and they allow you to use the toilet as easily as before. Feel secure with double anti-leak barrier and Dry Zone Technology.



**iD Form Plus**  
Pad length 640mm  
Capacity 1500ml



**iD Form Extra**  
Pad length 640mm  
Capacity 1900ml



**iD Form Extra Plus**  
Pad length 640mm  
Capacity 2350ml



**iD Form Super**  
Pad length 640mm  
Capacity 2900ml



**iD Form Super**  
Pad length 740mm  
Capacity 3200ml



**iD Form Maxi**  
Pad length 740mm  
Capacity 3900ml

PRODUCT CODE	DESCRIPTION	PAD LENGTH	DROPLET SCALE	TOTAL CAPACITY ISO	UNITS PER PACK	PACKS PER CARTON
5310260210	iD Form Plus	640mm	3	1500ml	21	8
5310265210	iD Form Extra	640mm	4	1900ml	21	8
5310270210	iD Form Extra Plus	640mm	5	2350ml	21	8
5310275210	iD Form Super	640mm	6	2900ml	21	6
5310375210	iD Form Super	740mm	6	3200ml	21	4
5310380210	iD Form Maxi	740mm	7	3900ml	21	4



Anti-leak barriers



SHAPE

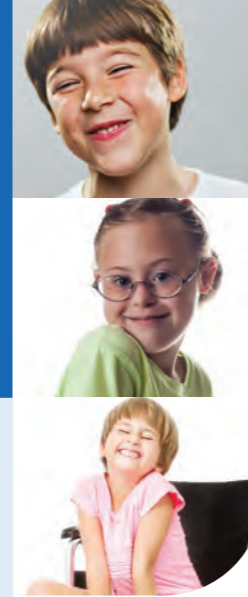




### Mesh Net Pants



Ideal when you want extra security and greater freedom of movement.



The iD range of figure hugging pants can be used to hold incontinence iD Form shaped pads securely in place. Both ranges of pants aid the risks of leakage whilst maximising comfort and security. Double elastics with tight seams and soft fibres allows more freedom of movement whilst also minimising the risk of skin irritation.



iD Care Comfort Super  
Sizes S/M/L/XL/XXL/XXXL



iD Care With Legs  
Sizes S/M/L/XL/XXL



iD Care Ultra  
Sizes M/L/XL/XXL

### TIPS

iD Comfort Super is machine washable up to 50 times in 60 degrees.

PRODUCT CODE	DESCRIPTION	PAD SIZE	WAIST	UNITS PER PACK	PACKS PER CARTON
5410100050	iD Care Comfort Super	S	40-80cm	5	20
5410200050	iD Care Comfort Super	M	60-100cm	5	20
5410300050	iD Care Comfort Super	L	80-120cm	5	20
5410400050	iD Care Comfort Super	XL	100-160cm	5	20
5410500050	iD Care Comfort Super	XXL	140-180cm	5	20
5410600030	iD Care Comfort Super	XXXL	180-195cm	3	20
5420100050	iD Care With Legs	S	50-75cm	5	10
5420200050	iD Care With Legs	M	70-90cm	5	10
5420300050	iD Care With Legs	L	85-110cm	5	10
5420400050	iD Care With Legs	XL	105-130cm	5	10
5420500050	iD Care With Legs	XXL	115-140cm	5	10
5400200250	iD Care Ultra	M	80-120cm	25	8
5400300250	iD Care Ultra	L	100-140cm	25	8
5400400250	iD Care Ultra	XL	120-160cm	25	8
5400500250	iD Care Ultra	XXL	140-180cm	25	8

SECURE



Double Elastic

### TIPS

Refer to iD parents guide on how to manage issues around night and day time wetting.



Security



Comfort



Discretion



### Comfy Junior - Pants/Slips



Pants and Slips that feel like underwear for juniors 4 to 15 years old.

The iD Comfy Junior range of pants and slips covers different age groups and special needs. The pants have a soft side panel, elastic underwear feel and a urine absorbing zone. The Slip is a great solution covering waist sizes from 40 to 70cm.



iD COMFY JUNIOR Pants  
Sizes XS  
Capacity 1150ml

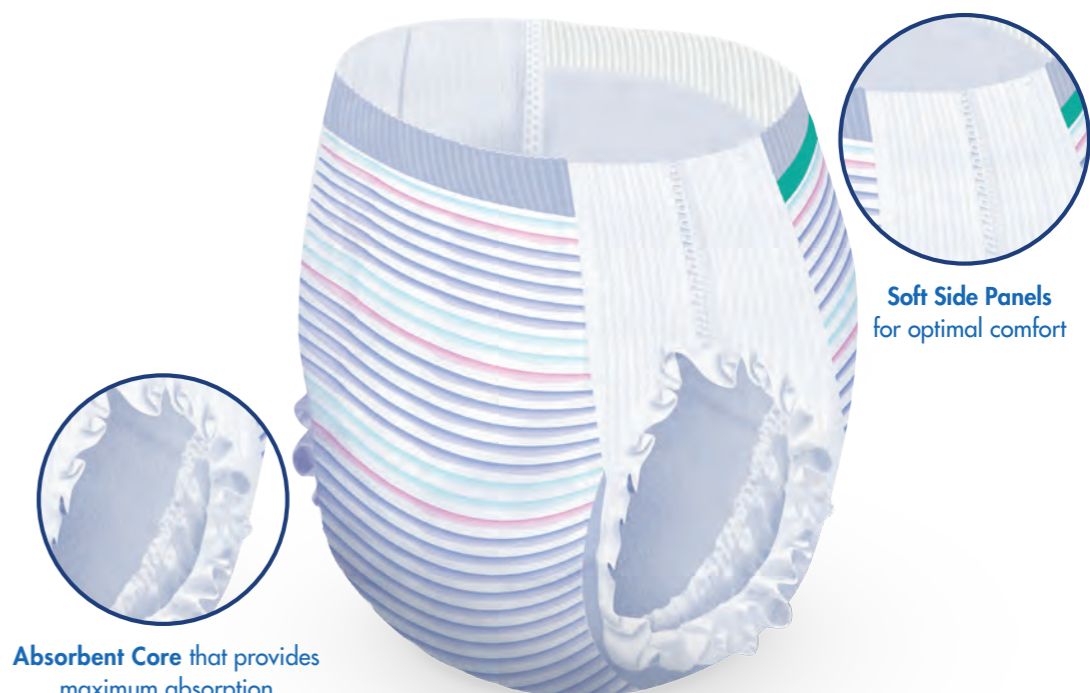


iD COMFY JUNIOR Pants  
Sizes S  
Capacity 1325ml



iD COMFY JUNIOR Slip  
Sizes XS  
Capacity 1550ml

PRODUCT CODE	DESCRIPTION	SIZE	TOTAL CAPACITY ISO	UNITS PER PACK	PACKS PER CARTON
5501135140	iD Comfy Junior Pants 4-7 years (17-27KG)	XS	1150ml	14	8
5501245140	iD Comfy Junior Pants 8-15 years (24-47KG)	S	1325ml	14	8
5501025140	iD Comfy Junior Slip (40-70cm)	XS	1550ml	14	12



Absorbent Core that provides maximum absorption

Soft Side Panels for optimal comfort





# SERENITY<sup>®</sup> Care

**Serenity Care** is a range of dermatologically tested skincare products designed for treating sensitive skin. A range specifically developed for continence care and overall well being. A three step protocol to aid healthy skin. Creams & cleansing milks are paraben free.

## 1 CLEANSE



**Serenity Care Cleansing Milk**  
Size 500ml  
No rinsing required



**Serenity Care Shower Gel**  
Size 500ml  
Body and hair gel



**Lille Tenderskins**  
Size 8 per pack  
Pre-moistened cloths contain Aloe Vera & Vitamin E



**Serenity Care Shampoo Cap**  
Single use impregnated with rinse free shampoo & conditioner



**Serenity Care Wet Wash Gloves**  
Size 8 per pack  
Ph Neutral and alcohol free



**Serenity Care Wet Wipes**  
Size 63 per pack  
Camomile to calm skin irritations

## 2 MOISTURISE



**Serenity Care Moisturising Body Milk**  
Size 500ml  
Nourishes & prevents dryness

## 3 PROTECT



**Serenity Care Barrier Cream**  
Size 100ml  
Apply thin layer to prevent and calm irritations

DISCOVER OUR  
**3-STEP  
PROTOCOL**



- Tips**
- Serenity Care Wet Wash gloves can be heated in a microwave for patient comfort.
  - Recommend a 3 step routine for treating sensitive skin (42% of patients can suffer incontinence related skin problems).\*



PRODUCT CODE	DESCRIPTION	SIZE	UNITS PER PACK	PACKS PER CARTON
35102001000	Serenity Care Cleansing Milk	500ml	1	12
35101001000	Serenity Care Shower Gel 2 in 1	500ml	1	12
TS1080	Lille Tenderskins	-	8	24
35102003000	Serenity Care Shampoo & Conditioner Cap	-	1	24
35102004800	Serenity Care Wet Wash Gloves (no perfume)	-	8	24
35102005000	Serenity Care Wet Wipes	-	63	8
35103001000	Serenity Care Moisturising Cream	500ml	1	12
35103002000	Serenity Care Barrier Cream	100ml	1	12

\*Source: J Junkin, JL Selekof; J Wound, Ostomy, Continence, Nurs. 2007; 34(3): 260-269.

2 Incontinence Associated Dermatitis (IAD): Best Practice for Clinicians. Wound, Ostomy and Continence Nurses Society, 2011 UK market data





## Disposable Bed Pads

Disposable protectors suitable for all levels of incontinence.

There are two ranges of iD disposable bed pads iD Expert Protect and iD Protect.

The iD Expert Protect range is designed to provide a high level of protection and softness during procedures.

The iD Protect range is designed for a high level of comfort and has fast absorbing protection sheet with a unique cushion design and is ideal for homecare.



PRODUCT CODE	DESCRIPTION	SIZE	ISO	UNITS PER PACK	PACKS PER CARTON
5800460300	iD Expert Protect Plus	40 x 60cm	525ml	30	9
5800660300	iD Expert Protect Plus	60 x 60cm	760ml	30	4
5800960300	iD Expert Protect Plus	60 x 90cm	1125ml	30	4
5800475300	iD Expert Protect Super	40 x 60cm	750ml	30	9
5800675300	iD Expert Protect Super	60 x 60cm	1125ml	30	4
5800975300	iD Expert Protect Super	60 x 90cm	1980ml	30	4
5800075200	iD Expert Protect Super	90 x 180cm	1650ml	20	4
5801660300	iD Protect Plus	60 x 60cm	580ml	30	4
5801960300	iD Protect Plus	60 x 90cm	960ml	30	4
5801675300	iD Protect Super	60 x 60cm	900ml	30	4
5801975300	iD Protect Super	60 x 90cm	1420ml	30	4



## Washable Bed Pads

Washable protectors suitable for all levels of incontinence.

Kylie is a proven and trusted range of washable bedding protection for over 45 years.

The Kylie range is known for quality and durability and is suitable for all levels of incontinence. Advanced technology with a five layer system that ensures the user stays dry and comfortable. The non-piling surface maintains skin integrity and all Kylie bed pads are dermatologically tested and latex free.

Washable range of bedding protection and covers.



Kylie Ultra Absorbent Bedding Protection  
Standard and Supreme  
Capacity 2000/2500ml



Kylie Ultra Absorbent Protection  
Chair and Utility  
Capacity 1000/1800/2200ml



Kylie Ultra Protection Waterproof Bedding  
Pillows  
Mattress Covers  
Sheets



Kylie Kids Supreme Mac  
(w/tuck ins. Waterproof Backing)  
Capacity 2500ml

### ✓ 5 Layers of Protection

✓ Washable

✓ Dermatologically tested

✓ Latex free

✓ Non slip

✓ Non pilling

✓ Anti & anti fungus

PRODUCT CODE	DESCRIPTION	SIZE	ISO	UNITS PER PACK
8356102	KYLIE Standard (Waterproof Backing)	71cm x 91cm	2000ml	1
8356106	KYLIE Supreme Mac (w/tuck ins. Waterproof Backing)	1m x 1m	2500ml	1
8356108	KYLIE Standard (Waterproof with Non-Slip Backing)	71cm x 91cm	2000ml	1
8356120	Kylie Kids Supreme Mac (w/tuck ins. Waterproof Backing)	1m x 1m	2500ml	1
8356109	KYLIE Supreme (w/tucks ins.)	1m x 1m	2500ml	1
8356202	KYLIE Chair Pad	-	1000ml	1
8356112	KYLIE Utility Pad - Medium	M	1800ml	1
8356113	KYLIE Utility Pad - Large	L	2200ml	1
8357002	KYLIE Pillow Cover	69cm x 48cm	-	1
8357003	KYLIE Fitted Mattress Cover - Single	188cm x 92cm x 20cm	-	1
8357004	KYLIE Fitted Mattress Cover - Double	188cm x 140cm x 20cm	-	1
8357006	KYLIE Fitted Mattress Cover - King Single	202cm x 104cm x 20cm	-	1
8357007	KYLIE Fitted Mattress Cover - Queen	204cm x 153cm x 20cm	-	1
8357013	KYLIE Double Draw Sheet (Non - Fitted)	152cm x 140cm	-	1
8357014	KYLIE Standard Draw Sheet	152cm x 90cm	-	1
8357015	KYLIE Draw Mac Waterproof Backing (w/tucks ins.)	1m x 1m	-	1



# Support & Resources

## Samples

Free samples can be ordered for your clients at [www.ontexhealthcare.com.au](http://www.ontexhealthcare.com.au)

Samples can be sent directly to you or your client in discreet packaging. You can also track the delivery.

## Ordering

Ontex partners with both national and local distributors who can deliver directly to your client.

## Online

Ontex provides helpful guides on how to manage incontinence and how to choose the most suitable iD product for your clients.

Visit our website or on Facebook. Follow us on Facebook to receive the latest news.



[facebook.com/iDInvisibleSolutionsAustralia](https://www.facebook.com/iDInvisibleSolutionsAustralia)

Ontex Healthcare Australia

[www.ontexhealthcare.com](http://www.ontexhealthcare.com)

# Ontex ACADEMY

Ontex provides training on-site or via eLearning through the Ontex Academy. The new on-line Ontex Academy is a user friendly interface for effortless learning 24/7. The interactive modules are designed to be engaging for you to learn and apply.

The modules are endorsed by the Australian College of Nursing (ACN) and attract CPD points. You can access the Ontex Academy training once you have set up your account on our website, [ontexhealthcare.com.au](http://ontexhealthcare.com.au).



## Community Sample Bag

Showcase to your clients the best solutions for their needs from light to heavy incontinence.

The community bag includes iD Samples, brochures and a prescribing pad. Contact your local Ontex representative to order.

## Sustainability

Ontex is committed to sustainability and continues to take actions to reduce emissions, waste and source ethically sustainable raw materials. In Europe and Australia our manufacturing plants use 100% green electricity and 86% of our production waste is recycled or incinerated with energy recuperation. Recycled materials are used in iD packaging and the core of the iD pads are made with PEFC sustainable pulp (100% natural cellulosic fibers).





# An Easy Guide To Select The Most Appropriate Product.



## LIGHT BLADDER WEAKNESS

### iD Lights

Product Code	Product Name	Waist Size	ISO
5121020201	Mini	-	170ml
5171025161	Mini Plus	-	260ml
5171030121	Normal	-	295ml
5171040101	Extra	-	500ml
5171055101	Maxi	-	668ml
5171070100	Super	-	800ml
5160030280	Expert Normal	-	295ml
5160040280	Expert Extra	-	500ml
5160050280	Expert Maxi	-	668ml



### iD for Men

Product Code	Product Name	Waist Size	ISO
5221040100	Level 2	-	430ml
5231050140	Level 3	-	653ml
5521260120	Level 4/M	80-120cm	990ml
5521360100	Level 4/L	100-145cm	990ml



## LIGHT TO MODERATE

### iD Comfy Junior

Product Code	Product Name	Waist Size	ISO
5501135140	Pants 4-7 years (17-27KG)	XS	1150ml
5501245140	Pants 8-15 years (24-47KG)	S	1325ml
5501025140-01	Slip (40-70cm)	XS	1550ml



## MODERATE TO HEAVY INCONTINENCE

### iD Forms

Product Code	Product Name	Waist Size	ISO
5310260210	Plus 2	-	1500ml
5310265210	Extra 2	-	1900ml
5310270210	Extra Plus 2	-	2350ml



## VERY HEAVY INCONTINENCE

### iD Slips

Product Code	Product Name	Waist Size	ISO
5630160140	Plus S	50-90cm	1800ml
5610260280	Plus M	80-125cm	2000ml
5610360280	Plus L	115-155cm	2350ml
5630460140	Plus XL	120-170cm	3200ml
5610270280	Extra Plus M	80-125cm	2600ml
5610370280	Extra Plus L	115-155cm	2950ml



### iD Belts

Product Code	Product Name	Waist Size	ISO
5700160140	Plus S	60-95cm	1500ml
5700260140	Plus M	70-115cm	1750ml
5700360140	Plus L	90-135cm	1850ml
5700460140	Plus XL	115-150cm	2100ml



### iD Pants

Product Code	Product Name	Waist Size	ISO
IDS62211114	Normal M	80-120cm	1045ml
IDS62311114	Normal L	100-145cm	1045ml
5531065141	Plus XS	50-70cm	1300ml
5531165140	Plus S	60-90cm	1320ml
IDS62221114	Plus M	80-120cm	1375ml
IDS62321114	Plus L	100-145cm	1375ml
IDS62421114	Plus XL	130-170cm	1375ml



## VERY HEAVY INCONTINENCE

### iD Forms

Product Code	Product Name	Waist Size	ISO
5310275210	Super 2	-	2900ml
5310375210	Super 3	-	3200ml



### iD Slips

Product Code	Product Name	Waist Size	ISO
5630075140	Super XS	40-70cm	1550ml
5630175140	Super S	50-90cm	2100ml
5630275280	Super M	80-125cm	3400ml
5630375280	Super L	115-155cm	3700ml
5630475280	Super XL	120-170cm	3800ml
5630575150	Super XXL	175-210cm	3200ml



### iD Belts

Product Code	Product Name	Waist Size	ISO
5700175140	Super S	60-90cm	1900ml
5700275140	Super M	70-115cm	2100ml
5700375140	Super L	95-135cm	2400ml
5700475140	Super XL	115-150cm	2600ml



### iD Pants

Product Code	Product Name	Waist Size	ISO
IDS62232114	Super M	80-120cm	1870ml
IDS62332114	Super L	100-145cm	1870ml
IDS62432114	Super XL	130-170cm	1870ml
5531575120	Super XXL	165-205cm	1655ml



## SEVERE INCONTINENCE

### iD Forms

Product Code	Product Name	Waist Size	ISO
5310380210	Maxi 3	-	3900ml



### iD Slips

Product Code	Product Name	Waist Size	ISO
5630180200	Maxi S	50-90cm	2300ml
5660280151	Maxi M	80-125cm	3600ml
5630380151	Maxi L	115-155cm	4500ml
5630480150	Maxi XL	120-170cm	4500ml



### iD Belts

Product Code	Product Name	Waist Size	ISO
5700180140	Maxi S	60-95cm	2600ml
5700280140	Maxi M	70-115cm	2900ml
5700380140	Maxi L	95-135cm	3400ml
5700480140	Maxi XL	115-150cm	3400ml



### iD Pants

Product Code	Product Name	Waist Size	ISO
5531280100	Maxi M	80-115cm	2200ml
5531380100	Maxi L	100-145cm	2200ml
5531480100	Maxi XL	130-170cm	2200ml



### Skin Care





**FOR CONTINENCE CARE**

---

*I Choose*



---

We've got you  
**COVERED**



Scan here to learn more.

**Call 1300 788 872**

For Customer Service or to speak to our  
State Based Business Development Team.

**FOLLOW US ON**  

**[www.ontexhealthcare.com.au](http://www.ontexhealthcare.com.au)**